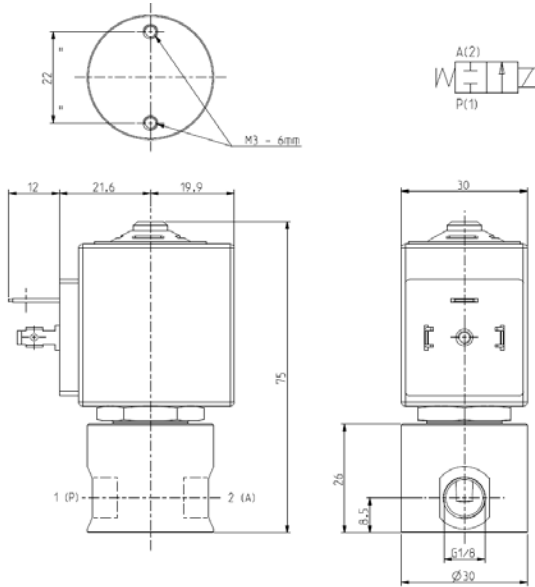




**SOLENOID VALVE - DRY**  
**2/2 - NC (Normally closed)**  
**Direct acting - Total isolation**  
**G 1/8**

**D105D31-D32**



► **GENERAL FEATURES**

Total isolation micro solenoid valve: the actuator is totally isolated from the medium so that the wetted parts are just the body and the diaphragm. Possibility of disassembling for inspection. The working pressure of the valve is function of differential pressure between inlet and outlet; see the drawing overleaf. Suitable to shut off liquid and gaseous fluids (verify the compatibility of fluid with materials in contact).

► **TECHNICAL FEATURES**

Maximum allowable pressure (PS) 4 bar  
 Opening time ~20ms  
 Closing time ~20ms  
 Fluid temperature -10°C +100°C  
 Max viscosity 5°E (~37 cStokes or mm<sup>2</sup>/s)

► **MATERIALS IN CONTACT WITH FLUID**

Body PVDF (Polyvinylfluoride): D105D-S-V-Z31  
 AISI 316 stainless steel (see notes): D105D32  
 Sealing EPDM or VMQ or FPM or FFPM

► **COIL**

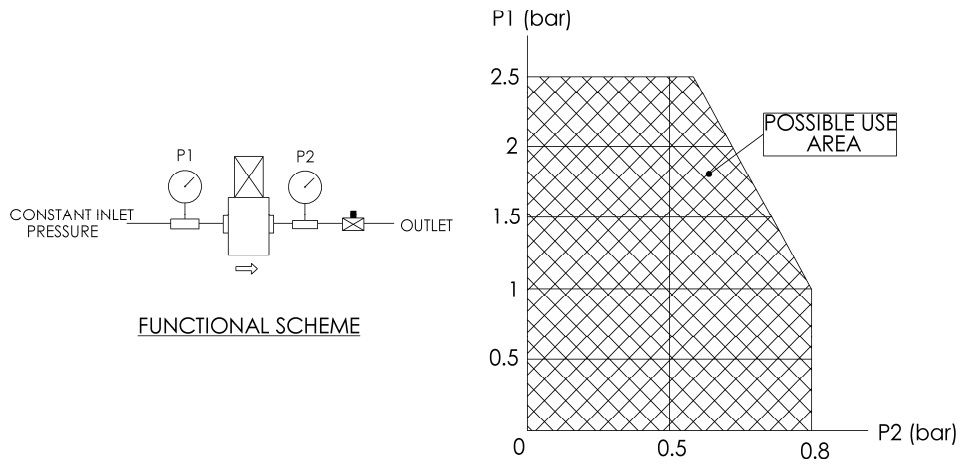
Continuous duty ED 100%  
 Encapsulation material PET (polyethylene terephthalate) fiberglass reinforced  
 Coil insulation class F (155°C)  
 Ambient temperature -10°C +60°C  
 Electric connections DIN 46340 - 3 poles connector (EN175301-803)  
 Protection degree IP 65 (EN 60529) with plug connector  
 Voltages DC 12-24V (+10% -5%)  
 AC 24V/50Hz-110V/50Hz (120V/60Hz)-230V/50Hz (+10% -15%).  
 (Other voltages and frequencies on request).

Port size ISO 228	Orifice size (mm)	Differential pressure (bar)				Kv (m <sup>3</sup> /h)	Series and type		Power absorption			Sealings	Notes	Weight (kg)	
		Δp min	Δp max		Valve		Coil	AC (VA)		DC (W)					
			Gases	Liquids				Inrush	Holding						
			AC	DC	AC	DC									
G 1/8	4	0	2,5	2,5	2,5	2,5	0,32	D105D31	ZA30A	23	14	9	EPDM	-	0,210
								D105S31					VMQ	1	
								D105V31					FPM	-	
								D105Z31					FFPM	1	
								D105D32					EPDM	1-2	

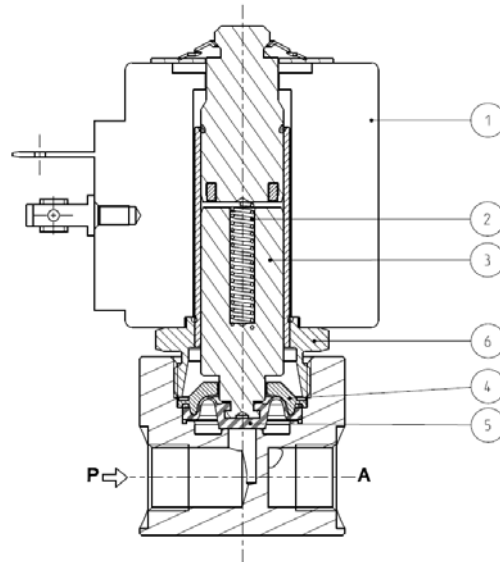
► **NOTES**

- Sealings : EPDM = Ethylene-propylene elastomer FPM = Fluoro-carbon elastomer VMQ = Silicone elastomer FFPM = Perfluorate elastomer  
 1 - Model available on request only; ask for minimum quantity.  
 2 - Body in AISI 316 stainless steel.

# D105D31-D32



## ► SPARE PARTS



### Kit description

Actuator kit

D105D31  
D105S31  
D105V31  
D105Z31

### Kit P.N.

G3146101  
G3146102  
G3146103  
G3146104

### Consisting of:

Core return spring pos.2  
Core pos.3  
Core tube pos. 6  
Spacing collar pos.4  
Diaphragm pos.5

Actuator kit

D105D32

G3146105

Core return spring pos.2  
Core pos.3  
Core tube pos. 6  
Spacing collar pos.4  
Diaphragm pos.5

Coil

ZA30A

Coil pos. 1

## ► MOUNTING

- Solenoid valve can be mounted in any position.

THE VALIDITY OF REPORTED DATA IS REFERRED TO THE DATE OF ISSUE. POSSIBLE UPDATES ARE AVAILABLE ON REQUEST.