

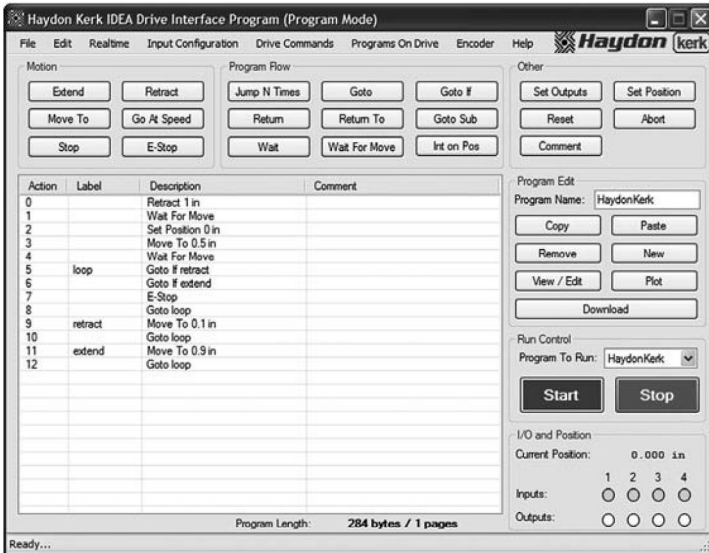
The IDEA™ Drive is a state-of-the-art electronic drive and fully programmable control unit that uses an intuitive Graphic User Interface (GUI). The IDEA Drive can be easily integrated with a stepper motor linear actuator combining the motor, linear translation, and programming in a single compact package.



IDEA
PROGRAMMABLE DRIVE

IDEA Drive Features

RoHS Compliance	Yes
Programming Language	On-screen GUI (Graphic User Interface)
Input Voltage	+12 to +48 VDC
Communication Type	USB to Mini USB
Microstepping	Full, 1/2, 1/4, 1/8, 1/16, 1/32, 1/64
Electronically Configurable	Using easy-to-use, on-screen graphics
Auto-population of Drive Parameters	Uses software prompt for part number
Programmable Acceleration and Deceleration	Yes
Programmable Current Control	Run and hold, boost to accelerate/decelerate
Movement Profile Plotter	Included
Interactive Program Debug	Yes. Line by line or multiple line application
Program Storage	Flash. 85 KBytes
Multiple Program Files	Yes. Organized by program name
Units of Measure	Metric or English, software configurable
User Label and and Comment Fields	Unlimited
Branching Functions	Yes
Interrupt Functions	Yes
Counter	64 bit
General Purpose I/O Inputs, Opto-Isolated	4 (5-24 VDC, 4 mA max. per input)
General Purpose I/O Outputs, Opto-Isolated, Open Collector	4 (5-24 VDC, 200 mA max. per output, pull-up resistor required)



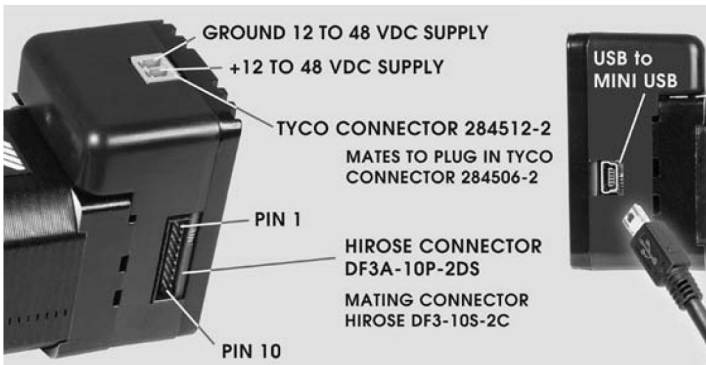
IDEA Drive software is simple to use with on-screen buttons and easy-to-understand programming guides.

The software program generates motion profiles directly into the system and also contains a “debug” utility allowing line-by-line execution of a motion program for easy troubleshooting.

Conventional wire connectors are also available from Haydon Kerk Motion Solutions:

Power Cable	Part Number 56-1348
USB to Mini USB	Part Number 56-1346
10 Wire I/O Cable*	Part Number 56-1352

*Cable required only if the actuator is linked to an external switch



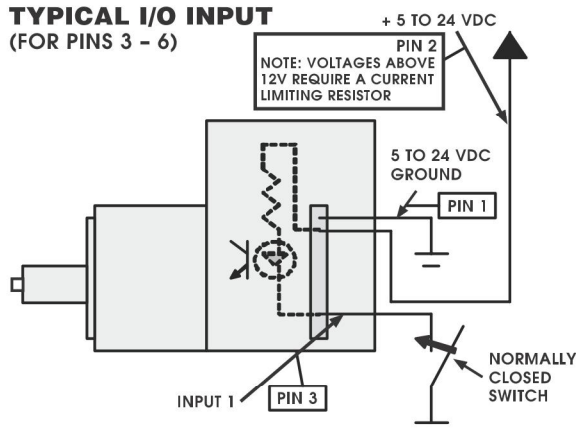
Computer Connection

- Communications: USB to mini USB (drive side)
- Power Supply Connector: Drive Side: Tyco 284512-2
Mating: Tyco 284506-2
- Digital I/O Connector:
Drive Side:
HIROSE DF3A-10P-2DS
Mating: HIROSE DF3-10S-2C

TABLE COMMON FOR EACH PRODUCT CONFIGURATION

PIN POSITION	DESCRIPTION	NOTES
PIN 1	GROUND I/O SUPPLY	5 TO 24 VDC
PIN 2	+ I/O SUPPLY	5 TO 24 VDC
PIN 3	INPUT 1	
PIN 4	INPUT 2	
PIN 5	INPUT 3	
PIN 6	INPUT 4	
PIN 7	OUTPUT 1	
PIN 8	OUTPUT 2	
PIN 9	OUTPUT 3	
PIN 10	OUTPUT 4	

TYPICAL I/O INPUT (FOR PINS 3 - 6)



TYPICAL I/O OUTPUT (FOR PINS 7 - 10)

